



United States (West Coast)

Leisure

🌐 Country : United States 📅 July 1994

The most beautiful pictures



A road trip of the west coast of the United States of America made during the summer of 1994. Here are some of the most beautiful pictures taken along the way.

Published Monday July 4th 1994, 18:36

Modified Monday July 4th 1994, 20:56



By Olivier Paudex

Introduction

The United States is a vast, vast country. It is almost impossible to visit it in one go. This travel is a slide show of pictures taken during a road trip with a friend, during the summer of 1994, from north to south, along the Pacific coast. From **Seattle to San Diego**, then on the way back through **Arizona, Utah, Montana**. Of course, there are the big cities, the ocean, and the national parks. But also corners of nature still preserved

where it is good to pitch the tent.

Seattle

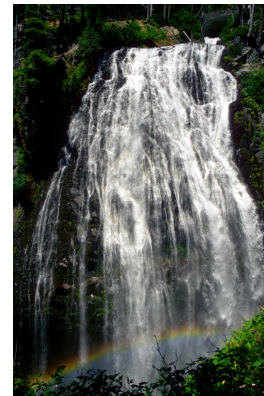
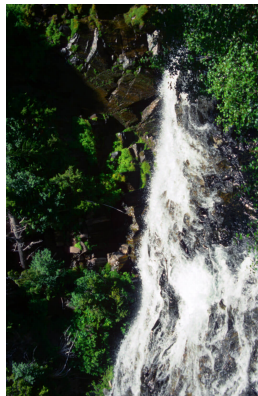
First city visited, in the state of Washington, in the far northwest. Its population, in 1994, was close to half a million and should double by 2030. Located on the Pacific coast, **Seattle** is above all a very pleasant port city to visit.



Seattle

Mont Rainier

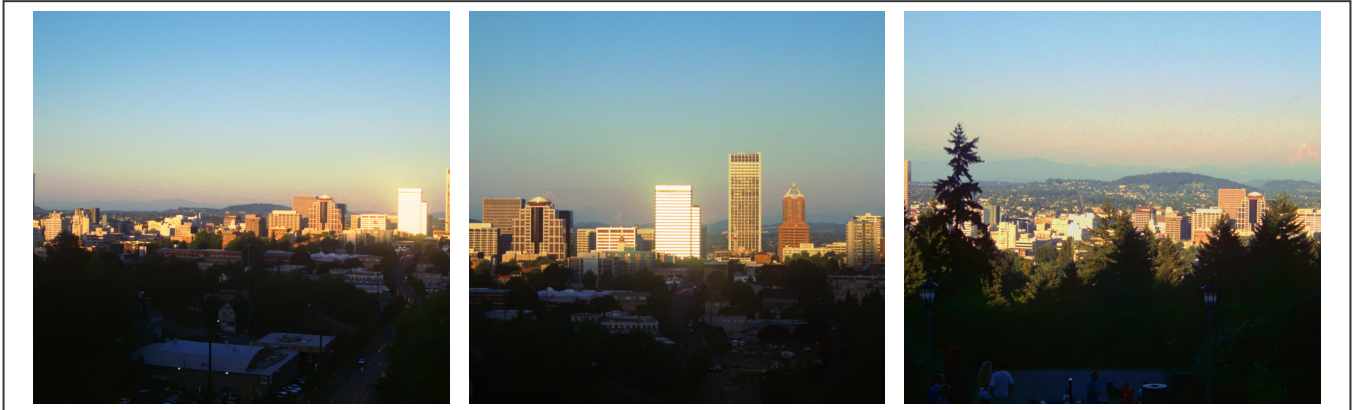
Located about 150km from **Seattle** on the highway, **Mount Rainier** is a still active volcano, whose summit reaches 4392m in altitude. Its last eruption was in 1894 and the landscape still remembers it.



The scorched earth of Mount Rainier and its waterfalls

Portland

Portland is the capital of Oregon. It is about the same size and number of inhabitants as **Seattle**, with about 500'000 inhabitants (in 1994). The Columbia River runs through it and into the Pacific Ocean. The city was founded in 1845.



Portland

Pacific Ocean

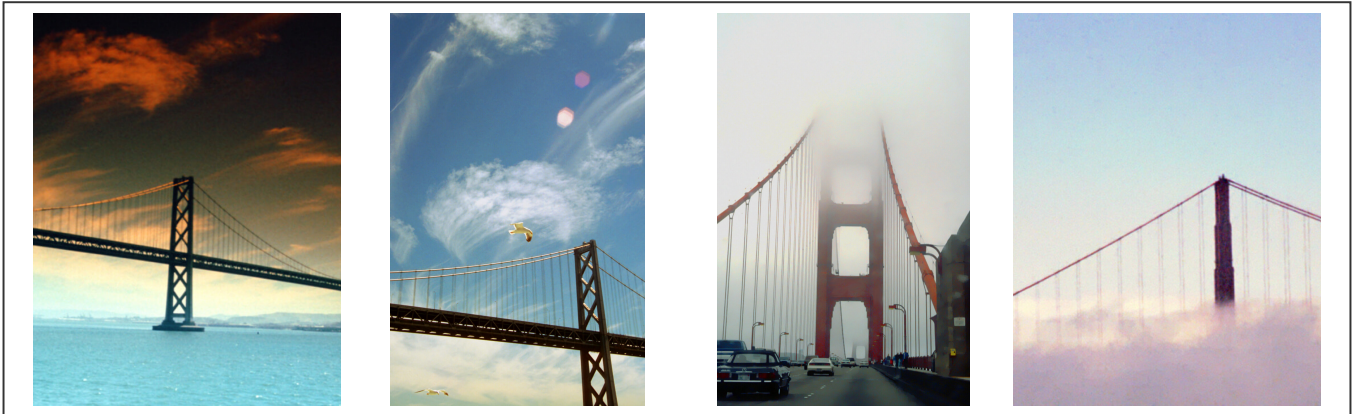
Driving down the west coast of the Pacific is really unforgettable. Especially at the end of the day, when the sun is going down.



Sunset on the Pacific Ocean

San Francisco

Located at 1000km from **Portland**, along the coast, the city of **San Francisco** has about 800'000 inhabitants (in 1994). It is the 4th largest city in the state of California, after **Los Angeles**, **San Diego** and **San Jose**. San Francisco is known for its bridge, the "**Golden Gate**", its prison "**Alcatraz**" and its fishing docks.



San Francisco's Golden Gate

Alcatraz

The most famous prison in the history of American penitentiaries. "**Al Capone**", among others, stayed there. Three fugitives, the "**Anglin**" brothers and "**Frank Morris**" went on the lam in 1962. The penitentiary closed in 1963.



Alcatraz

Giant Sequoias forests

Giant Sequoia National Park is located about 400km from **San Francisco**, on the road to Fresno. It is also called "**Redwood forest**". The trees can measure up to 9m in diameter and over 80m high.



The giant sequoias of Redwood forest

Los Angeles

Los Angeles, also called "**City of Angels**" or "**La La Land**", is the 2nd largest city in the United States, after New York. It has more than 3 million inhabitants (in 1994) and is expected to reach 4 million by 2030. Los Angeles is known for the **Disneyworld** park, the **Beverly Hills** district and the **Hollywood letters** on its hill, as well as for the "**Sunset Boulevard**" and its movie stars.



Sunset Boulevard and its stars

Disneyworld

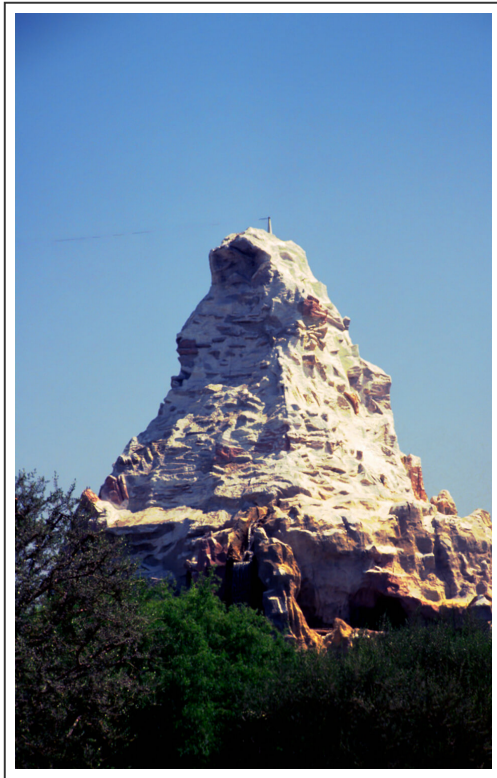
One of the most famous franchise of Hollywood cinema, "**Star Wars**", with **R2D2**, **C3PO** and the **X-Wings**

...



Star Wars in Disneyworld

... Without omitting a small part of Switzerland, where the Americans manufacture a pale copy of our so beautiful **Matterhorn**.



Oh...



The Matterhorn

Hollywood

Hollywood or the "**Sacred Wood**", does not really exist. Its hill belongs to the **Beverly Hills** neighborhood.



Beverly Hills

Redondo Beach

Los Angeles is also known for its beaches. The most famous being **Malibu, Santa Monica and Redondo Beach**.



Redondo Beach

Phoenix

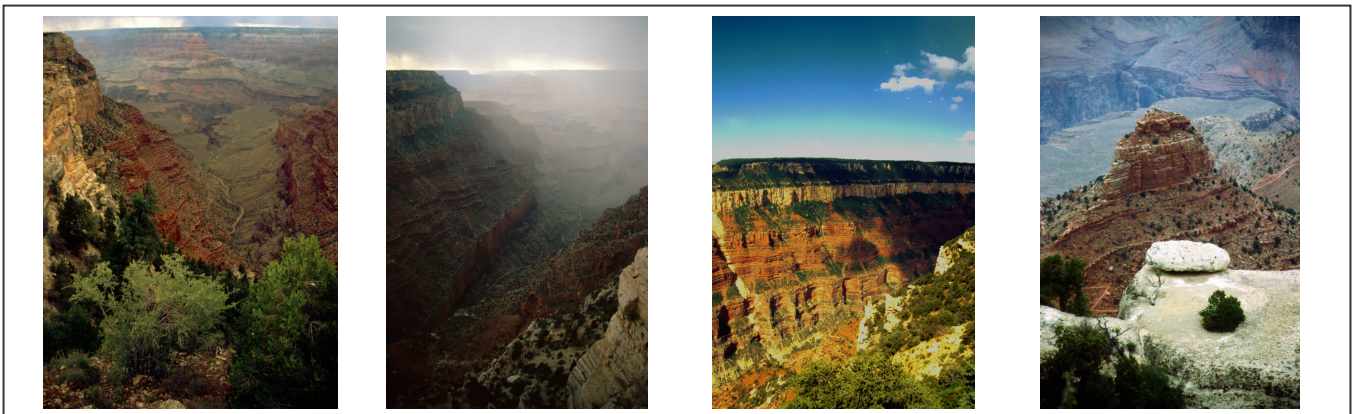
Phoenix is a city located in the state of Arizona. It is located at 600km from **Los Angeles**, in the middle of the desert. It is very hot. The temperature, in summer, can exceed **50 degrees Celsius**. It is an ideal stopover for those who want to visit the **Grand Canyon** and **Bryce Canyon** National Parks.



The Phoenix palms

Grand Canyon

The Grand Canyon National Park is part of the “**Colorado River**” Basin. The canyon is more than 450km long, with a height of 800m in some places. The national park is by far the most visited by tourists. Each year, 5 million visitors come to admire its landscapes or go hiking.





Grand Canyon National Park

Bryce Canyon

Bryce Canyon National Park is located 700km from **Phoenix**, in southern Utah. It covers 150km² and was founded in 1928. It is the erosion caused by the wind and the rain which gave to its pillars of red, white, ochre colors, this famous architecture. The park is always in motion.

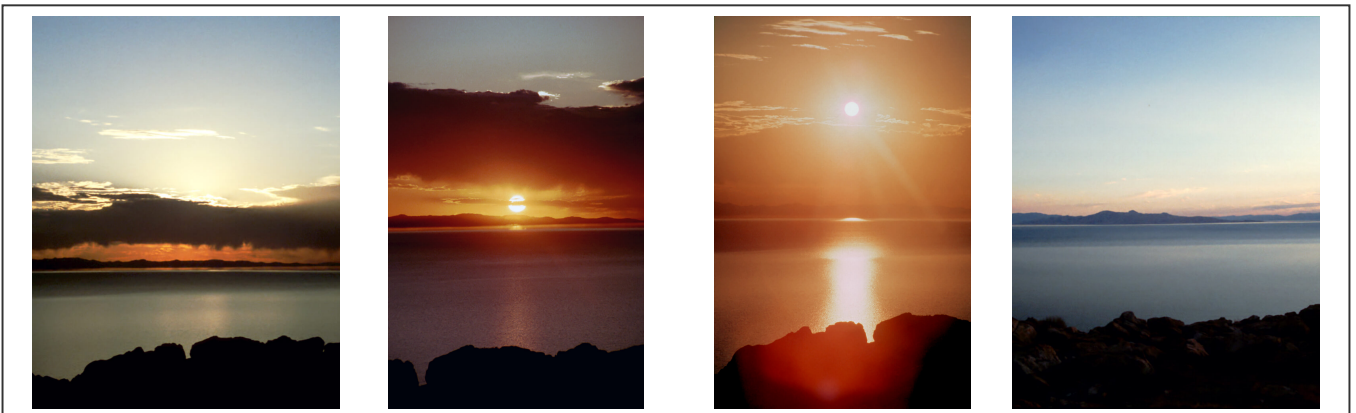




Bryce Canyon National Park

Salt Lake City

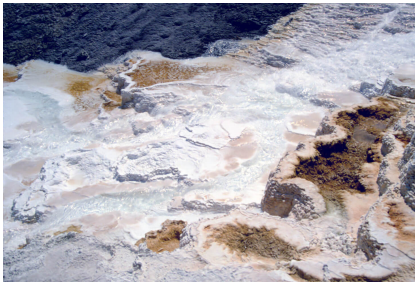
Salt Lake City is the largest city in Utah. Founded in 1847 by the first pioneers who were also the first followers of the Mormon order. The Mormons, a Christian religion, have the largest family tree database. It is also a mountain region and a ski area. The lake is salty, hence the name **Salt Lake City**.



Salt Lake city at sunset

Yellowstone

Yellowstone National Park is located in the state of Wyoming and also extends into Idaho and Montana. It was the first national park opened to tourists in 1872. It attracts more than 4 million people a year and became a UNESCO World Heritage Site in 1978. The most famous attraction of the park is the "**Old Faithful Geyser**". The park measures over 9000 km².

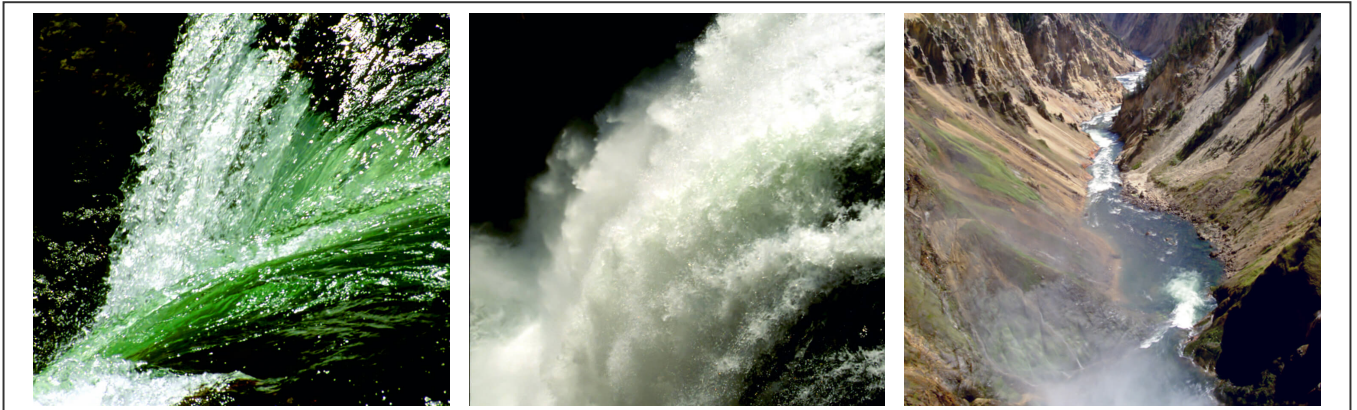




Fountains, geysers, waterfalls and still lifes

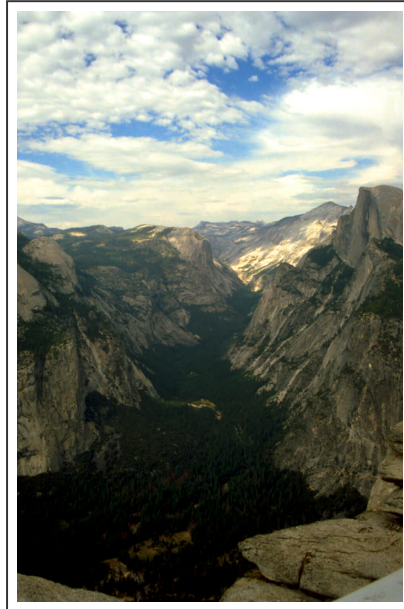
Yosemite

In 1864, **Yosemite National Park** was the first natural area to be protected in the United States. It covers an area of 2000km². It is well known for its waterfalls, hiking and recreational activities.



Waterfalls in Yosemite Park

Another point of interest in **Yosemite** is its half-domed mountain peak.



Yosemite National Park

