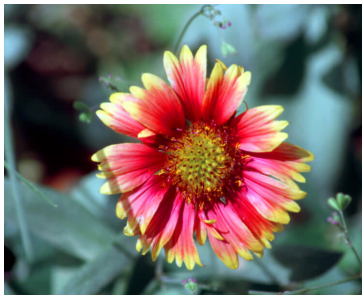


Madagascar

Leisure

🌐 Country : Madagascar 📅 January 2000

The most beautiful pictures



Madagascar is an island with a thousand facets. From the mountains of the high plateau where the capital Tananarive is located to the seaside in Tulear, the landscapes offer a great variation of colors. Tananarive is a jewel in the middle of the ocean which hosts a quantity of flora unique in the world.

Published Sunday January 30th 2000, 18:17

Modified Sunday January 30th 2000, 18:55

 By Olivier Paudex

Introduction

This travel starts in **Antananarivo**, the capital, and goes down the only road to **Tulear**, then returns to its starting point.

Madagascar is a paradisiacal island, but really very poor. It is better to have an adventurous spirit when travelling here. My father lived there for 10 years. It was a unique opportunity to go and see him again, as well as to visit this extraordinary island.

Antananarivo

Antananarivo is a big city of more than one million inhabitants, built around the lake "Anosy". It is warm all year round. Malagasy people speak French and the local language. The territory of the center of the island is mountainous and the city is located at about **1280m** of altitude.



House of my father



Bunch of bananas



and its flower

The rice fields around Tanarive

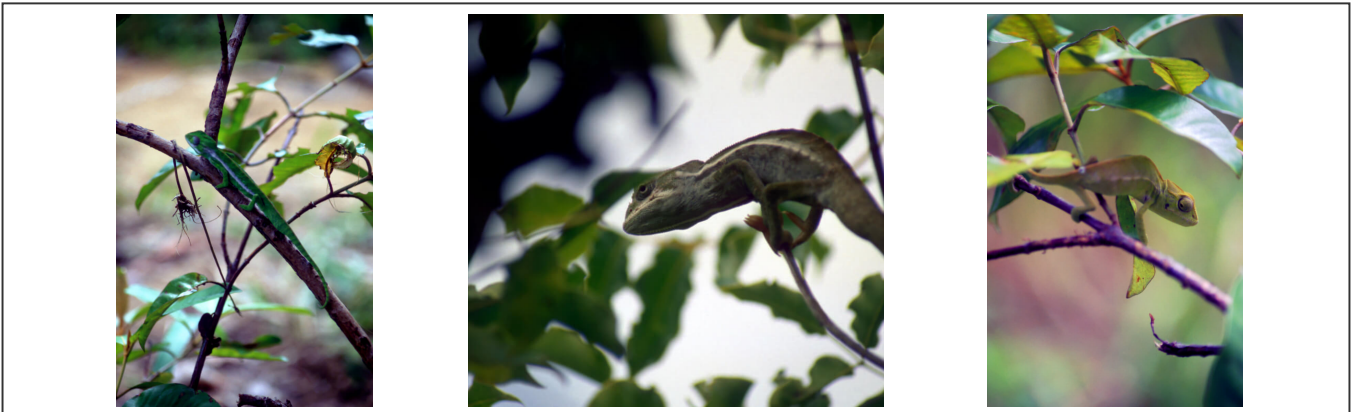
Rice is the main food of the Malagasy cuisine. It is strongly cultivated in the suburbs of **Antananarivo**. The contrast between the green fields and the red earth is surprising.



The rice fields around Tananarive

Chameleon hunting

The trees and the different plants are covered with a small chameleon that plays with colors according to the danger.



The chameleons of Madagascar

Antsirabe

Antsirabe is located at 170km from Tananarive. It is the 3rd largest city of the island. Its population is about **200'000 inhabitants (in 2000)**. Antsirabe and its region has many thermal springs. It is also the city of the rickshaw.



The streets of Antsirabe

Fianarantsoa

Fianarantsoa is located 240km from Antsirabe. The region abounds in vineyards. It has a high city as well as a cathedral.



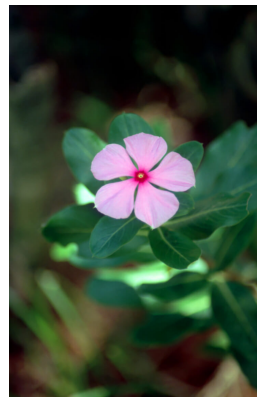
Hôtel in Fianarantsoa

Ranomafana

In the region of **Fianarantsoa** is the natural reserve of **Ranomafana**. Many research centers of big European and American companies have established their base camp. The flora is very abundant and varied.



The traveler's tree, the symbol of Madagascar





Lots of flowers in Ranomafana

On the track between Fianarantsoa and Ihoisy

The track is the only practicable road. Not tarred, it is in relatively good condition, but the vehicles take big shocks, as well as the passengers.





On the track

Ihosal

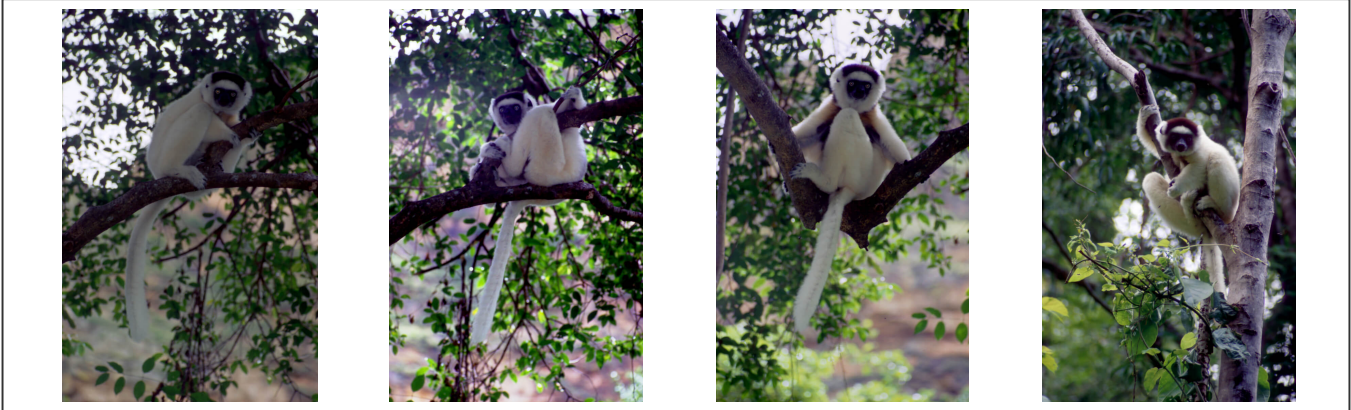
Ihosal is located 200km from Fianarantsoa. The city has about **30'000 inhabitants (in 2000)**. It is a crossroads where all the main roads intersect. It is also the inevitable passage for the national park of Isalo.



The streets of Ihosal

Isalo National Park

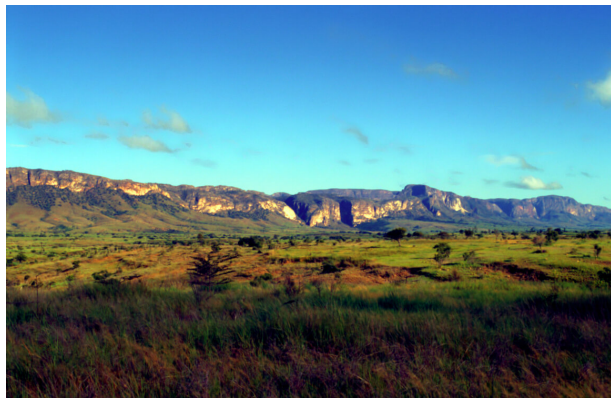
Ranohira is the starting point of treks in the jungle towards the **Isalo National Park**. To be done on foot preferably to preserve nature and to marvel at the contact of the fauna, in particular the numerous lemurs which settle down when the silence returns.



The lemurs of Isalo

The way back to Ranohira

To reach **Ranohira** on foot, it's about 2 hours of walking (9km) through breathtaking landscapes, rivers to cross and children met on the paths.



Children and nature

Tulear

Tulear is located 320km from Ihosy and 930km from Tananarive. **Tulear** is a commercial and cultural city. It has its own university dating from 1971. The region is well known by tourists for its beach of "**Ifaty**", located a little further north.



Sunset on the seaside