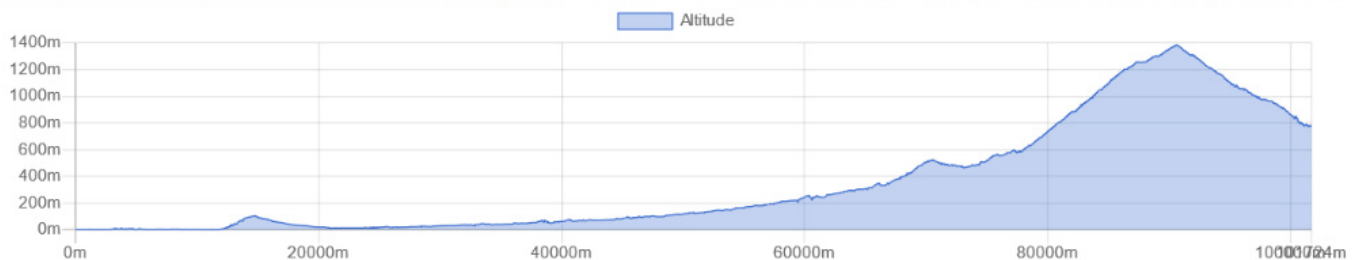
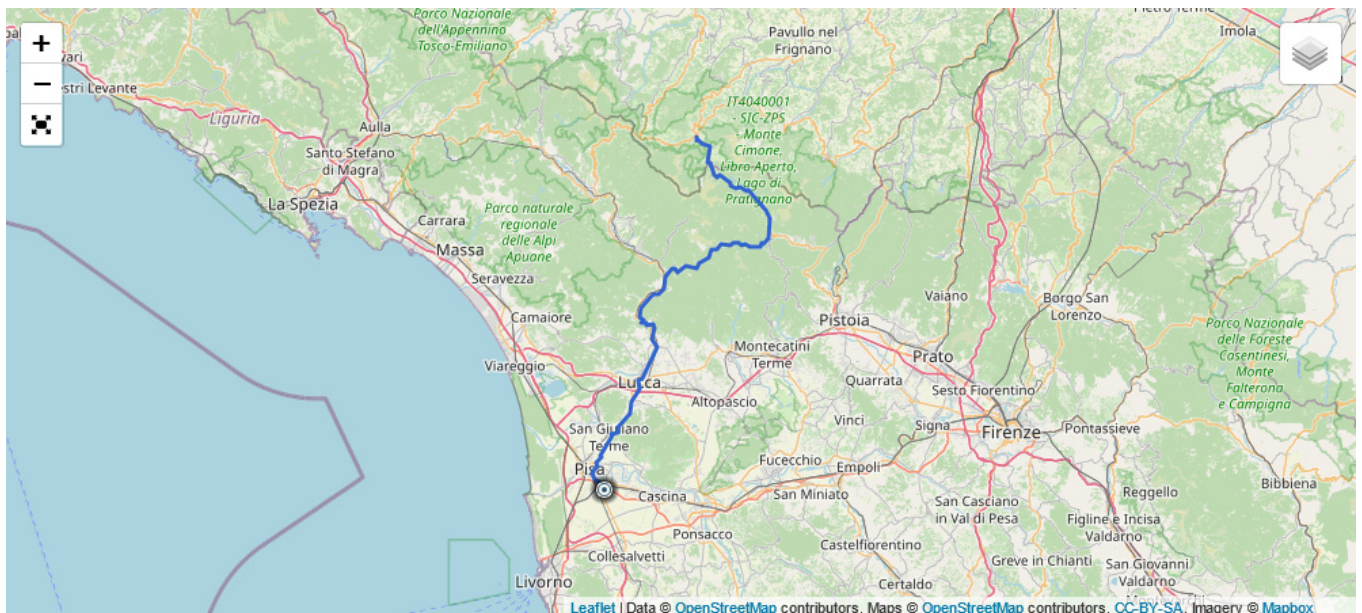


Tour of Tuscany (Day 1)

Road

📏 Distance : 102 km 🏔️ Elevation : 2030 m ★ Difficulty : 3

📍 Start point : Pise 📍 End point : Pievepelago



Pisa is a good starting point. It is the capital of Tuscany and is well known for its leaning tower, which is not without interest. On the program of this first day in Italy, the passing of the Arno to leave the city, the crossing of the city of Lucca, and some 100km to finish in the charming city of Pievepelago

Published Saturday May 19th 2018, 18:11

Modified Saturday May 19th 2018, 18:48



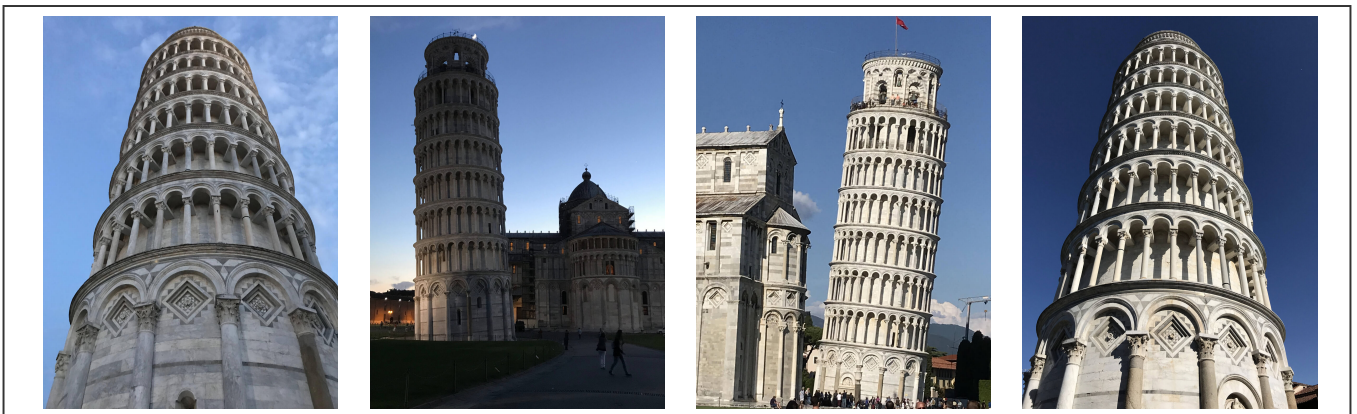
By Olivier Paudex

Introduction

This tour of Tuscany, like others, was organized by [Sport Azur](#), a company based in France. Without wanting to advertise them, the team members have become friends with whom these tours would never have taken place.

Start from Pisa (First day)

Capital of Tuscany, Pisa is a large city of about 90'000 inhabitants. It is a very touristic city. To come at the end of May is an ideal moment, both for the still pleasant temperature of late spring, and for the tourist season which is not yet in full swing.



The Pisa's tower

Lucca

After crossing the Arno River, a little more than 20km from **Pisa** is the first town on the route, **Lucca**. This city is surrounded by a wall and has a very pleasant central square.



Lucca's central square

Pievepelago

Located halfway between **Bologna** and **Florence**, **Pievepelago** is not well known by tourists. It is nevertheless a pretty town, with an interesting historical center. The area is known for its many sporting activities, including cycling and skiing in winter.



The city of Pievepelago