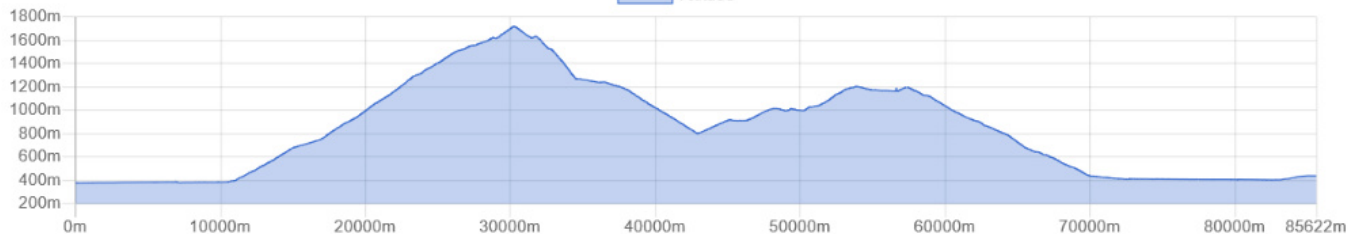
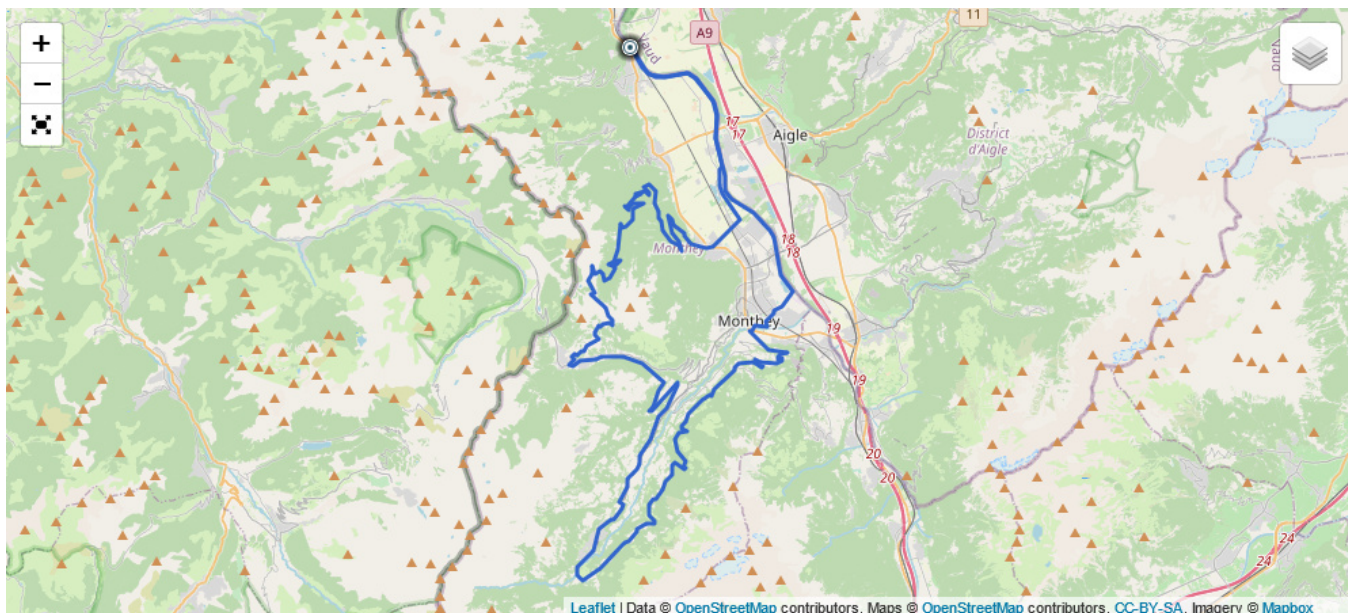


The Grand-Paradis

Road

🏔️ Distance : 86 km
🏔️ Elevation : 1950 m
★ Difficulty : 4
📍 Start point : Vouvry



To reach the Grand-Paradis through the Portes de Culet, quite a challenge! A positive difference in altitude of 1400m on 20km passing by some neglected roads. Fortunately, the beauty of the landscape surpasses everything.

Published Friday July 22nd 2016, 18:39

Modified Friday July 22nd 2016, 19:07



By Olivier Paudex

Introduction

The **Grand-Paradis**, very popular for the alpinists, belongs to the ski resort of **Champéry**. This loop, before reaching this paradise, takes you to the summit of the **Portes de Culet**, at 1787m.

Start from Vouvry

The route starts on the plain, along the Rhône, for about ten kilometers to warm up. In **Illarsaz**, the road turns right, to take us to **Muraz**, where the difficulties begin.

The Portes de Culet

The slope increases quite abruptly and continues for about twenty kilometers until the place called "**Les Portes de Culet**". The road then goes back down to **Morgins**, then **Troistorrents**, **Val-d'Iliez** and **Champéry**. It is possible to eat here, because the village offers many terraces.



The refreshment stand of the Portes de Culet

The Grand-Paradis

After the snack, the road goes up a bit before reaching the **Grand-Paradis**, the focal point of this tour. The place has nothing extraordinary, except for its camping in summer and its ski resort in winter. Nevertheless, the parking lot is often crowded with mountaineers who meet here to reach the surrounding peaks.

Way back

The return passes through **Choëx, Monthey**, before joining the shore of the Rhône to reach **Vouvry**.

Have a nice trip.